



APPLIED INDUSTRIAL TECHNOLOGIES  
**QUARRY APPLICATION**

 VISIT [APPLIEDAU.COM.AU](http://APPLIEDAU.COM.AU) OR [APPLIEDNZ.CO.NZ](http://APPLIEDNZ.CO.NZ)

# TORQUE-ARM II

## Shaft Mount Gear Reducer

Torque-Arm II shaft mount reducers deliver a longer life in demanding applications. Torque-Arm II is designed with a patented harsh-duty sealing system, twin-tapered bushings, and the highest torque rating per case size. It provides maximum reliability with less maintenance to increase operating time and lower your total cost of ownership.

### Why Torque-Arm II?

#### EASY TO USE

- Flexible mounting to minimize inventory including shaft mount, flange mount, and screw conveyor drives
- Features twin-tapered bushing system that makes installation and removal quick and easy

#### ATEX CERTIFIED

Environments that are mildly explosive become safer with use of ATEX certified reducers.

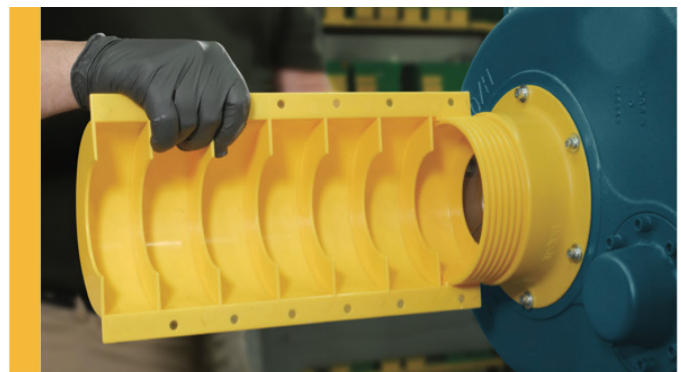


#### AVAILABILITY

- Available in 12 case sizes up to 400 Hp (300 kW)
- Torque ratings through 500,000 lb-in (56,500 Nm)
- Accommodates shaft sizes up to 7 in (160 mm)
- Warranty coverage is 36 months from date of manufacture or 18 months in service

#### SAFETY FIRST WITH INBOARD SHAFT GUARD

Dodge safety bushing covers are made from a heavy-duty ABS polymer. It covers the shaft between the gearbox and bearing. They are available individually or as a kit. It's trimmable to 1 in increments and adjustable to 1/4 in to fine tune.



#### NEW TA II SAFETY BELT GUARD

Designed to protect workers from rotating equipment, the Dodge Torque-Arm II belt guard has been enhanced with features that increase safety and reduce operating costs. Maintenance crews can now easily inspect v-belts mounted in the most common mounting positions, while following MSHA/ OSHA regulations.

# TORQUE-ARM II

## Shaft Mount Gear Reducer accessories

### BELT GUARD PACKAGE

Allows for multiple height adjustments, featuring a lift-off cover construction.

### MOTOR MOUNT

Provides stable mounting between motor and reducer to minimize overhung load and withstand heavy shock loading.

### TWIN TAPERED BUSHING

Easy on, easy off assembly providing reliable support on both sides of reducer. Available for shorter shafts when replacing a single-bushed or straight-bore reducer.



### BACKSTOP

Safety feature that prevents reverse rotation when system stops. Compatible with standard and EP lubricants without requiring external lubrication.



### TIE ROD KIT

Provides a safety link between reducer and structure to prevent system rotation. Standard rods and turnbuckles are now zinc coated for corrosion resistance.

### SCREW CONVEYOR DRIVE PACKAGE

Torque-Arm II uses a CEMA screw conveyor adapter.

It's available with multiple diameter driveshafts to match CEMA screw dimensions.



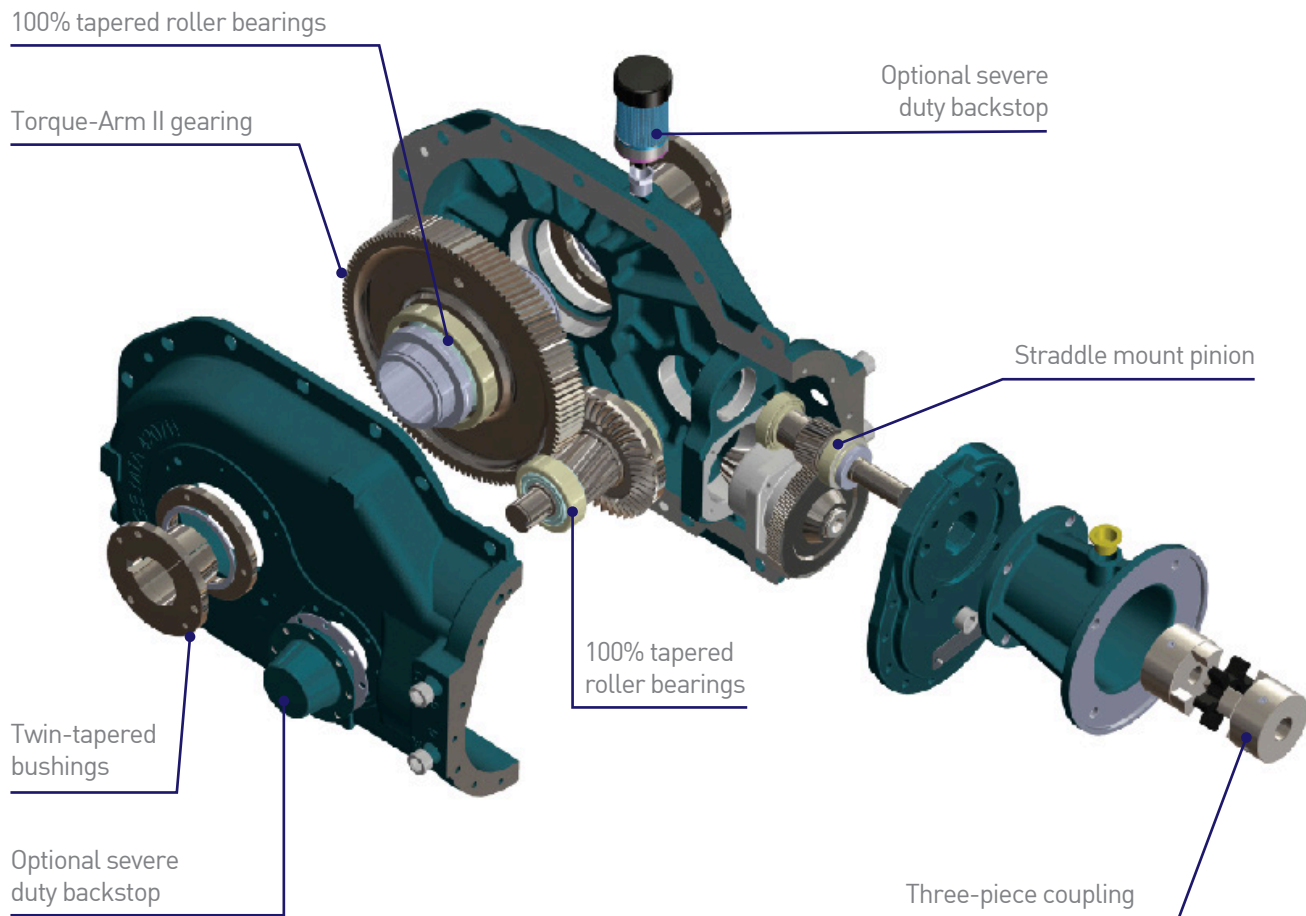
### HYDRA-LOCK BREATHER

To be used in humid or dusty environments, this optional breather's check valve system prevents ambient conditions and improves positive maintenance practices.



# MOTORIZED TORQUE-ARM II

## Shaft Mount Gear Reducer



The Motorized Torque Arm II (MTA) is easy to install and built to last. It is a right angle, beltless direct-drive solution. This heavy-duty gear reducer is designed to deliver industry-leading performance in some of the most demanding applications.

The MTA features the patented twin-tapered bushing system that makes installation and removal easy. This system is available in standard and short-shaft systems and both guarantee maximum torque transmission.

Engineered for reliability, the MTA has patented, premium-sealing systems that provide maximum uptime with less maintenance. This product is also ATEX certified and complies with Category 2 and M2 equipment, which is intended for use in potentially explosive atmospheres.

### MTA FEATURES

- Compact space-saving design
- Rugged and case-carburized helical bevel gearing
- Heavy-duty tapered roller bearings throughout
- Harsh-duty lip seals for extended wear and -40°C to +150°C (-40°F to +300°F) temperature ranges
- Metal excluder shield-sealing system with rubber contact lip
- Standard IEC B5 flange adapter or NEMA C-face motors
- Available in seven sizes from 1.5 kW to 75 kW (3 hp to 100 hp)
- All tapered roller bearings

# XT CONVEYOR PULLEYS

PT Components

## A worldwide reputation for reliability and quality

Dodge heavy duty drum and wing pulleys have been operating in the world's most demanding bulk material handling applications for over 100 years.

From Conveyor Equipment Manufacturers Association (CEMA) standards to large, highly-engineered pulleys, Dodge can supply complete pulley assembly packages made from the best components in the business.

### FEATURES

- XT bushings with 9.5 degree taper angle for easy-on, easy-off
- High strength submerged arc or gas-metal arc welds
- Available with vulcanized SBR, Neoprene, Ceramic, or D-Lag lagging
- Custom diameters and face widths upon request



# ISN SPHERICAL ROLLER BEARINGS

## Bearings

### Easy installation and removal

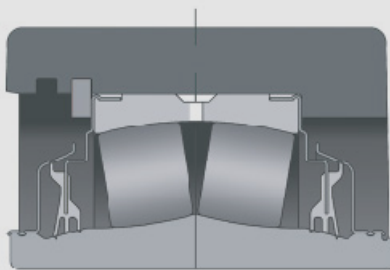
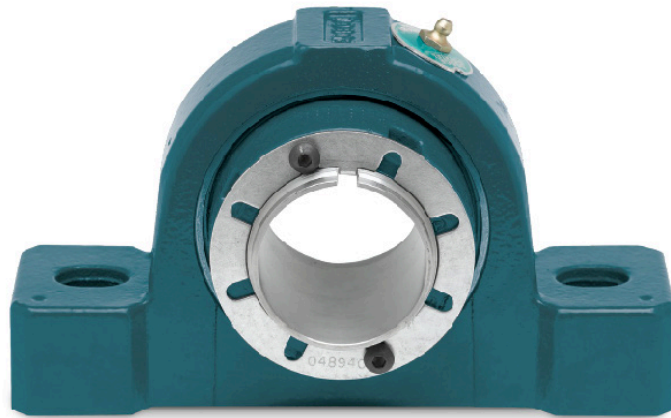
Dodge ISN mounted spherical roller bearings feature a patented integral adapter mounting and removal system that makes this bearing easy to install and remove with no shaft damage. The ISN arrives in one piece and is out-of-the-box ready to install.

#### BENEFITS

- Factory sealed and greased
- Patented sealing for extended life
- Full concentric on the shaft
- Interchangeable with SN dimensioned housing
- Expansion capability

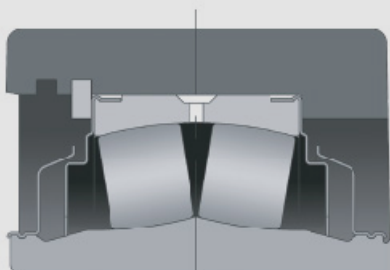
#### PRODUCT OFFERING

- Cast iron two-bolt plummer block bore sizes, 30mm to 140 mm
- Ductile iron four-bolt plummer block bore sizes, 150mm to 170mm



#### TRIDENT SEAL

- Extremely effective for dirty environments, low to medium speeds, and normal ambient conditions
- Patented nitrile triple-lip rubbing seal
- Low coefficient of friction
- Seal land maintains full seal contact even when misaligned



#### LABYRINTH SEAL

- Corrosion-resistant flingers
- Steel clearance seals
- Ideal for higher speeds and higher operating temperatures

## IIOT TECHNOLOGIES

Dodge provides monitoring solutions that give an overall health indication of products, letting you know when maintenance is needed before it's too late.

Industrial Internet of Things (IIoT) allows users to reduce downtime, improve reliability, and operate safely. The Dodge sensor gives warnings on decreasing health status, which allows you to plan maintenance before there is a problem and the system goes down. The ability to monitor mechanical products remotely allows maintenance and other personnel to safely assess equipment health without physical interference.



	<b>Dodge products are IIoT ready</b>	<b>Sensors</b>	<b>Gateways</b>
<b>DESCRIPTION</b>	Factory-prepared mounted bearings and enclosed gearing are shipped ready for easy sensor installation. When combined with easily commissioned sensors, safety improves and enables predictive maintenance.	Easy-to-use wireless sensors monitor the health of your Dodge products, allowing users to operate safely, improve reliability, and reduce or eliminate unscheduled downtime.	Data-collecting portals where information is stored and analyzed to monitor the overall performance of your equipment. There are two user-friendly options: <ul style="list-style-type: none"> <li>• The cloud gateway uploads data to a cloud-based portal.</li> <li>• An on-premise gateway provides a wireless, cloud-free solution that communicates sensor data to existing industrial control systems such as PLCs and HMIs.</li> </ul>
<b>BENEFITS</b>	<ul style="list-style-type: none"> <li>• Mounted bearings and gearing are sensor ready and include: drilled, threaded, and plugged installation holes.</li> <li>• Domain expertise in applying sensors across a wide variety of applications and industries.</li> <li>• Dodge Field Sales Engineers understand your applications and how sensors can move those applications to include all the advantages of IIoT.</li> </ul>	<ul style="list-style-type: none"> <li>• Battery operated</li> <li>• No wiring</li> <li>• No special tools required</li> <li>• Reduce downtime</li> <li>• Improve safety</li> <li>• Predictive maintenance</li> </ul>	<ul style="list-style-type: none"> <li>• Simple</li> <li>• Safe</li> <li>• Secure</li> <li>• Cloud-free solution</li> </ul>

# SCAN THE QR CODE & CONNECT WITH US



Follow us



Join Our Network



Become A Fan

AU



NZ

VISIT [APPLIEDAU.COM.AU](http://APPLIEDAU.COM.AU) OR [APPLIEDNZ.CO.NZ](http://APPLIEDNZ.CO.NZ)

*Contact an Applied® representative today!*