

 **APPLIED**  
Industrial Technologies®

*Martin*

The **ONE** you rely on





## About Martin

Martin is a leading supplier of Power Transmission Components, Material Handling Systems and Industrial Hand Tools. A trusted authority in the marketplace, Martin leverages a deep knowledge of Power Transmission and Material Handling applications to provide reliable cost-saving solutions to its industrial customers.

Operating from more than 34 locations worldwide, Martin carries the vast inventories of a global company while consistently delivering exceptional local service and support.

Known for meeting tight deadlines and solving unique manufacturing challenges, Martin keeps the industrial world moving efficiently.



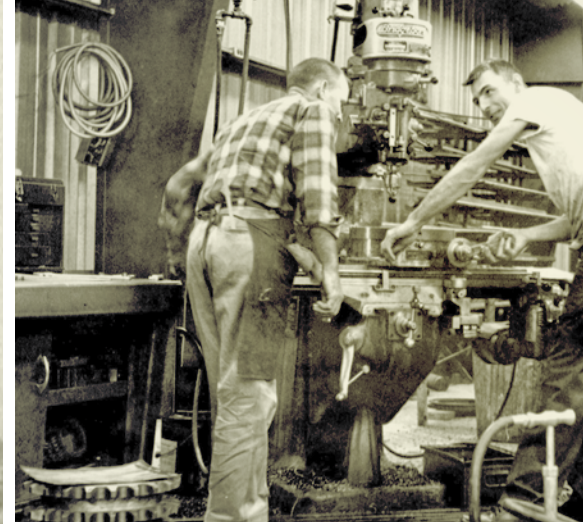








*From Humble Beginnings...*







Martin was founded in 1951 based on the vision of Joe Martin Sr. with a simple philosophy, "Make quality products, have plenty of them available, and make it easy for customers to do business."

Today each Martin facility stocks an extensive inventory of its product lines and has the ability to manufacture or custom alter parts for emergency situations. Local service and on-site field service ensure that customers maximize uptime and efficiency.

After more than 70 years of adapting with growing industries, Martin's continued focus on Quality, Inventory, and Service makes Martin the One you rely on.

***To Unmatched Quality  
Inventory & Service***









# Power Transmission

Power Transmission Products When and Where You Need Them

Martin carries the largest inventory of stock Power Transmission Components worldwide and offers lightning fast delivery times for altered and Made-to-Order parts to keep your equipment in motion.

SPROCKETS 

GEARS 

GROOVED PULLEYS 

SYNCHRONOUS SPROCKETS 

COUPLINGS 

BUSHINGS 



# Power Transmission

Power Transmission Products When and Where You Need Them



## Sprockets

Martin sets the standard for Sprocket manufacturing with the most extensive offering of stock and Made-to-Order Sprockets.



## Gears

From Spur Gears to Worm Gears, Martin provides a massive inventory of Gears and offers quick delivery on a wide range of specialty Gears.



## Grooved Pulleys

Martin keeps the industry's v-belt drives running with stock and Made-to-Order Pulleys manufactured in our facilities worldwide.





## Synchronous

Martin supplies reliable Synchronous Sprockets and Timing Belt Pulleys for all major brands of high-performance belts or to meet custom specifications.



## Couplings

Martin carries a complete line of shaft Couplings in a wide range of materials to ensure Shaft alignment and increase uptime.



## Bushings

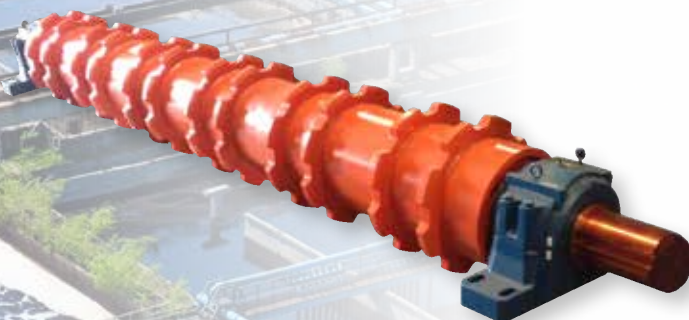
Martin stocks all popular types and sizes of interchangeable Bushings and Weld-On Hubs to fit any industrial application.



*Martin*



 Bucket Elevators



 Sprocket Rollers



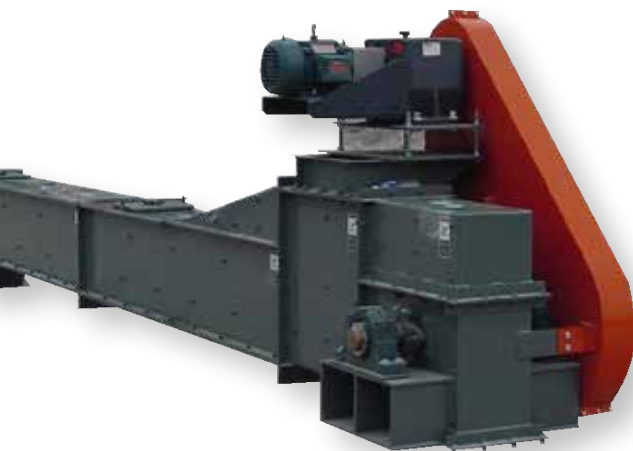


# Material Handling

Efficient Material Handling Systems  
& Reliable Components




 **Screw Conveyors**



 **Drag Conveyors**



 **Food-Grade &  
Metal Detectable  
Specialty Conveyors**

Martin manufactures efficient, reliable Conveyors and components in strategic locations throughout the world. When it comes to Material Handling challenges, an experienced Martin field support technician is always just a phone call away.



 **Components**





# Heavy-Duty Conveyor Drum Pulleys

High-Performance Conveyor Drum Pulleys for Any Application

Martin's Heavy-Duty Conveyor Drum Pulleys are manufactured to offer maximum protection against premature failure in harsh applications. Martin delivers stock and Made-to-Order Conveyor Drum Pulleys within hours and days, not weeks.

## ● Profiled End Disc Pulleys

Are engineered to offer an efficient and improved alternative to standard stock drum pulleys.



---

PROFILED END DISC PULLEYS ●

---

HEAVY-DUTY WING PULLEYS ☼

---

ENGINEERED CLASS PULLEYS ⚙

---

SPECIAL CONSTRUCTION PULLEYS ▨



The Martin logo is located in the top right corner, featuring the word "Martin" in a white, stylized script font on a dark blue rectangular background.

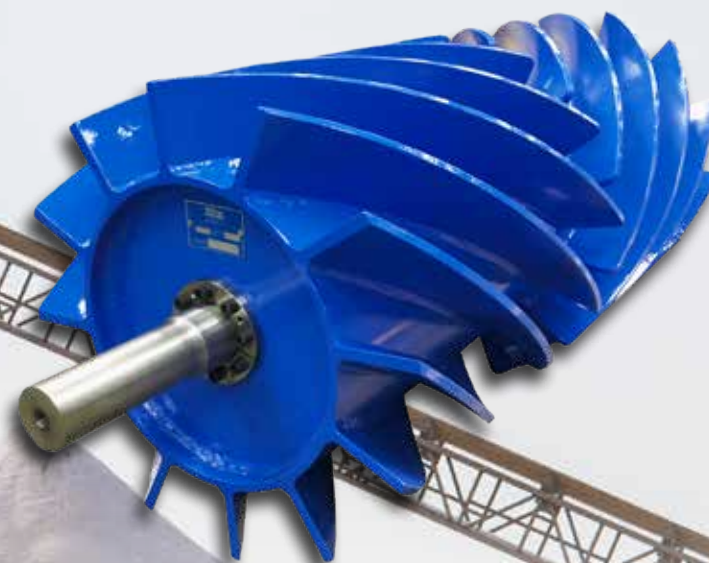
## Engineered Class Pulleys

The Martin engineered class pulley (ECP) line can be used effectively in every industry to ensure optimum performance and pulley longevity.



## Wing Pulleys

Available in Standard, Quarry, and Mine Duty configurations, Martin's Heavy-Duty Wing Pulleys meet the demanding requirements of harsh applications.



## Clean Flight® Wing

The innovative design of Martin's Clean Flight® wing pulley combines the material rejection technology of a screw conveyor with the durability of a heavy-duty wing pulley. Constructed with distinctly aggressive materials & thick flights, Clean Flight® wing pulleys are built to withstand abrasive applications.





Martin's Heavy-Duty Conveyor Drum Pulleys components follow the same quality manufacturing standards to support the best performance for your conveyor belt.

LAGGING 

BUSHINGS & HUBS 

TAKE-UP FRAMES 

SHAFTING 

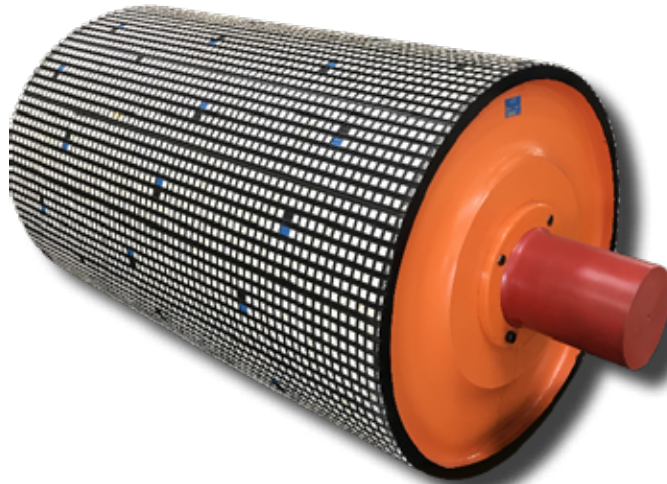






# Conveyor Drum Pulleys Components

Quality Components for all Conveyor Needs



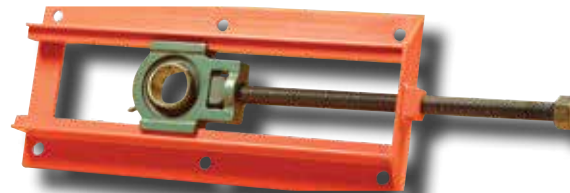
## Lagging

The right lagging on a pulley is one of the most cost efficient ways to reduce the risk of slippage. Martin's experienced team will advise which lagging is the best problem solver for your needs.



## Shafting

Martin offers a wide variety of solutions for your shafting needs, from cold finish 12.7mm diameter to hot roll material in excess of 381mm diameter.



## Take-Up Frames

A properly designed belt conveyor will require the use of a take-up device, Martin take-up frames are fabricated from steel, offering superior strength and durability in the most rugged conditions.



## Bushings & Hubs

Martin's bushings, keyless locking devices and weld-on hubs are specifically designed for use on Conveyor Drum Pulleys, available from stock to fit all popular pulley sizes.





## Idler-Rollers

Prolong Idler Service Life and Reduce Conveyor Operating Costs with Martin Idler-Rollers

Martin Idler-Rollers are manufactured to exceed CEMA standards. Martin uses triple labyrinth seals and sealed-for-life ball bearings that allow for trouble-free idler life in the harshest of applications. Martin can provide complete, cost-saving solutions for your belt conveyor needs.

IMPACT IDLERS 

TROUGHING IDLERS 

SELF-ALIGNING IDLERS 

RETURN IDLERS 

FLAT CARRIERS 

IMPACT BEDS 

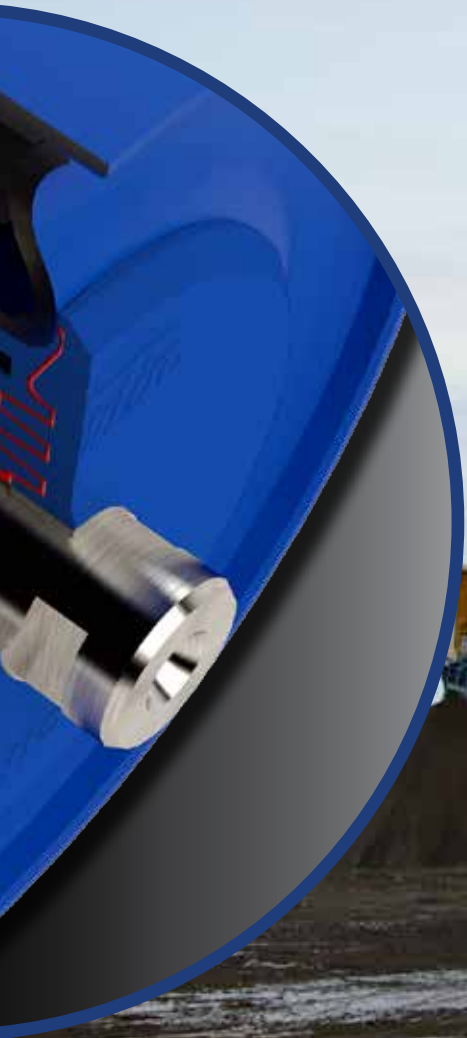
GALVANIZED FRAMES 

MADE-TO-ORDER





*Martin*







BODY & FENDER HAMMERS 

BODY & FENDER PICKS 

BODY & FENDER SPOONS 

BODY & FENDER DOLLIES 

HAMMERS 

WRENCHES 

SOCKETS 

SCREW DRIVERS 

PUNCHES & CHISELS 

OTHER TOOLS 



## **Body & Fender Tools**

Drawing from decades of experience serving the automobile repair industry, Martin is proud to supply American-Made Body Hammers, Dolly Blocks, Body Picks, Tool Sets, Files and more. Martin delivers quality tools that stand up to the toughest of body and fender repair tasks.



## Industrial Hand Tools

Continuing a Tradition of Quality Tools You Can Rely On



### Industrial Hand Tools

Continuing a tradition of American tool manufacturing, Martin is proud to produce high-quality, durable industrial Hand Tools, Sockets, Wrenches, Hammers, Pliers, Screwdrivers, Punches, Chisels, and Master Sets that withstand frequent use.





# Custom Capabilities

SINTERED METAL

INJECTION MOLDING

PLASTIC MILLING

FORGINGS

CASTINGS

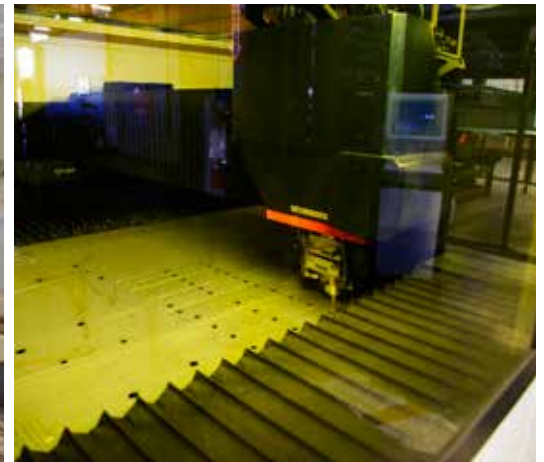
WATER JET

LASER CUTTING





Martin offers a wide range of manufacturing processes to meet any custom need. Martin can fabricate, cast, forge, sinter and injection mold to almost any custom specification as well as any secondary operations. This helps eliminate the need for multiple vendors and reduces production time, which leads to substantial cost savings for your organization.









## Global Strength, Local Service

During our years serving the Power Transmission & Material Handling industries, Martin has built a reputation on quality service. Our experienced industry professionals have a deep understanding of the regional and market nuances of the territory they serve.

We believe it should be easy to reach a knowledgeable, dedicated person who is ready to help. Whether it is training at our facility, a meeting in your office, or an on-site analysis at a plant – the Martin team is ready to help you increase uptime and cost savings.



# Market Expertise

Martin's extensive product line addresses the ever-changing needs of a wide variety of industries throughout the world. Martin employs leading experts in each industry and continually innovates to deliver value-added solutions that minimize downtime, reduce maintenance costs, and solve countless other daily operational challenges.

AGRICULTURE

ALTERNATIVE ENERGY

BEVERAGE BOTTLING

CHEMICAL PROCESSING

COMMERCIAL CONSTRUCTION

ENVIRONMENTAL

FOOD PROCESSING

FOREST & WOOD PRODUCTS

HIGHWAY & TRANSPORTATION

HVAC

MINING

OIL & GAS

PACKAGING

PHARMACEUTICAL

PULP & PAPER

RENDERING

WASTEWATER

AND MANY MORE







## Locations

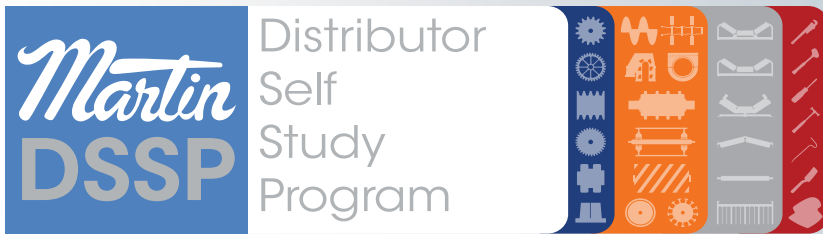
Since its founding in Arlington, Texas in 1951, has grown to more than 34 locations worldwide. These manufacturing and sales branches are strategically located to service industrial need with fast response and reliable quality anywhere in the world.

Working with your local branch connects you with a vast network of experienced sales, engineering, manufacturing and service focused industrial experts.

These branches carry extensive inventories of Power Transmission and Material Handling parts for quick alterations. Made-to-Order parts and components are produced regionally for quick delivery in emergency situations.

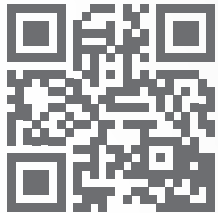
Our organization may be global, but we are still proud of our local approach to service and quality. From the first phone call to final inspection, your order is treated with a sense of urgency and is inspected during each manufacturing process.

*When downtime is not an option, Martin is the ONE to rely on.*



There is much to know about Martin products, capabilities, strengths and advantages. For this reason, we have prepared DSSP training as an initial introduction to the world of Martin. We hope it becomes a tool to strengthen your knowledge of our products.

You can enroll in our available trainings by visiting [martinsprocket.com](http://martinsprocket.com) and clicking under resources. We look forward to your feedback. For any inquiries please contact us at [DSSP@martinsprocket.com](mailto:DSSP@martinsprocket.com).



POWER TRANSMISSION

MATERIAL HANDLING

INDUSTRIAL MARKET SERIES

MAINTENANCE & TROUBLESHOOTING

MULTI-LANGUAGE







# Documented Cost Savings

From Downtime Avoidance to Product and Maintenance Trainings

## CHALLENGE

What problem is our customer facing?

## SOLUTION

How did we help our customer solve the problem?

## IMPACT

How much money did we help our customer save?



### Industry: Port Loading Facility

- An iron ore port loading facility in China was experiencing material buildup on the pulley face and on the inside of the belt. This was causing premature belt wear due to the material damaging the inside cover of the belt resulting in frequent belt replacement.

**Documented Cost Savings - \$40,000**



Martin manufactures Heavy-Duty Conveyor Pulleys offering maximum protection against premature wear in harsh environments.

The unique construction of Martin Clean Flight® Wing Pulleys offers improved material rejection, optimized belt cleaning, and less vibration in operation.

### Common Conveyor Pulley Applications

Aggregate and Cement, Mining, Pulp and Paper, Food and Beverage, Lumber and Forstry, and more

### Challenge

- Present a product solution that would reduce material buildup.
- Present a solution that would increase the service factor of the belt and conveyor pulley.

### Solution

- Martin's China sales team were able to quickly identified the existing issues with the standard duty tail drum and recommended a mine duty Clean Flight® Wing pulley to improve material ejection, belt service life and tracking.
- Martin produced a mine duty Clean Flight® Wing Pulley that dramatically improved material ejection from this system while providing a belt cleaning effect through the spiral rotation of the wings contacting the belt.

### Impact

- Through the service and support of the Martin China team, the customer's material buildup and ejection issue was solved while measurably increasing the service life of the conveyor belt.



### Bottom-Line Results

**Saving on Belt & Pulley Replacement**  
(Belt \$24,000 + Pulley Refurbish \$4,000 + Labor and Tools \$ 18,000 = \$40,000)

**Documented Cost Savings \$40,000**

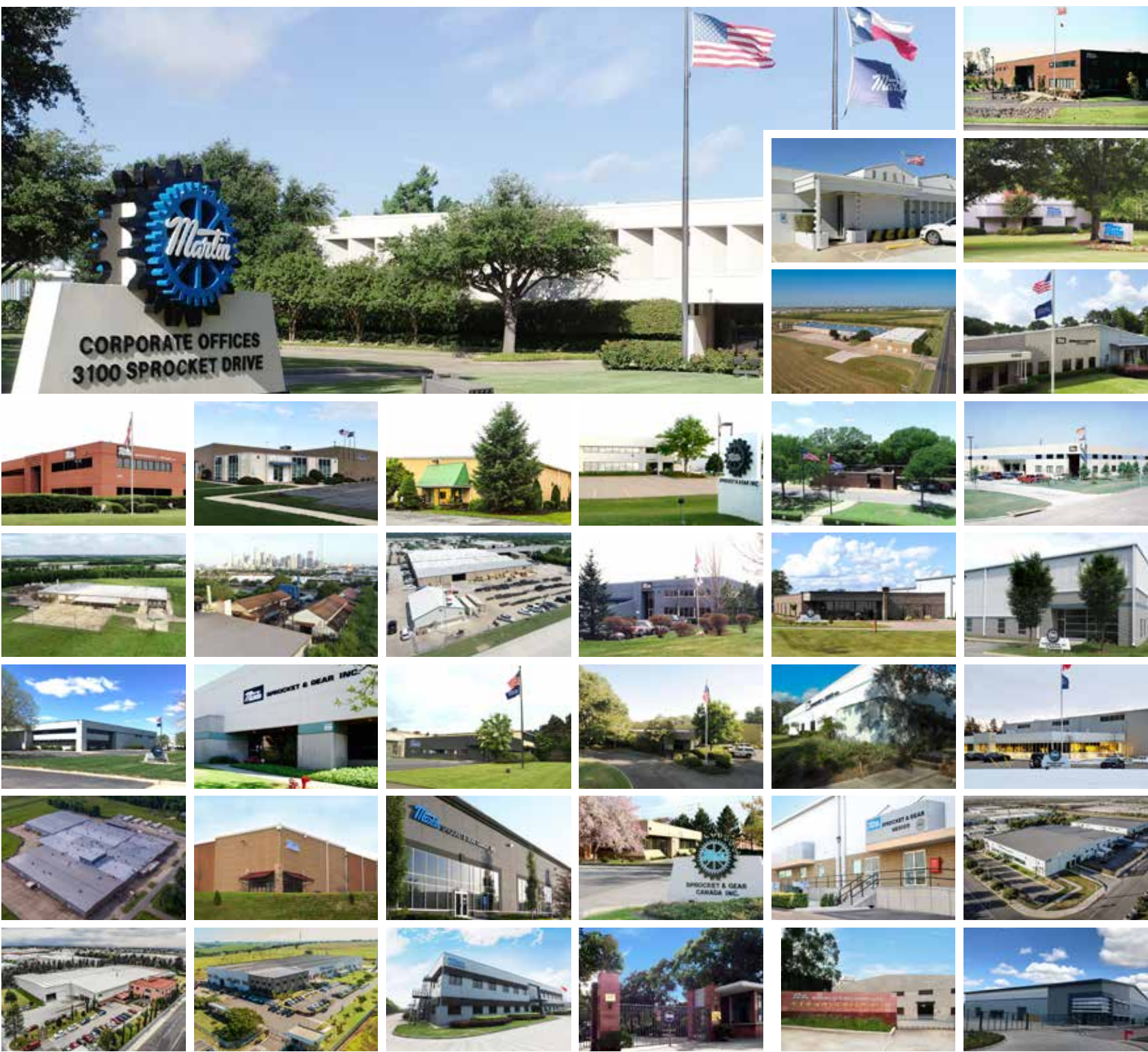
Learn more about Martin and conveyor components at:

[www.martinsprocket.com](http://www.martinsprocket.com) +86 021 67084888

+86 0519 86226788

Documented cost savings, or DCS, are important to our business because they are important to your business. Using clear formulas based on customer provided figures, we provide a concise document to explain how cost savings are achieved through quantifiable data and value added services.

Whether it is an after-hours call, product standardization or engineering assistance to increase throughput or decrease downtime, Martin provides excellent service and documented cost savings to the customer.



**CHINA**

Shanghai • Changzhou • Fuzhou  
Tel: +86 21 6708-4888  
Fax: +86 21 6708-4889  
intl@martinsprocket.com

**USA**

**Corporate Offices**  
**Sales & Manufacturing**

Arlington, TX  
Tel: 817-258-3000  
Fax: 817-258-3333

**Regional**

**Manufacturing Plants**

Albemarle, NC • Atlanta, GA  
Burleson, TX • Danielsville, PA  
Ft. Worth, TX • Montpelier, OH  
Sacramento, CA

**Branch Manufacturing Plants**

Boston, MA • Charlotte, NC  
Chicago, IL • Denver, CO  
Houston, TX • Kansas City, MO  
Los Angeles, CA • Minneapolis, MN  
Nashville, TN • Pittsburgh, PA  
Portland, OR • Tampa, FL

**Manufacturing Only**

Abilene, TX • Clarksville, TX  
Dallas, TX • Mansfield, TX  
Paragould, AR

**CANADA**

Cambridge, Ontario  
Edmonton, Alberta  
Mississauga, Ontario

**MEXICO**

Guadalajara, JAL  
Monterrey, N.L.  
Toluca, MEX

**BRAZIL**

São Paulo, SP

**UNITED KINGDOM**

Warwick, UK

Distributor authorized by Martin

**[martinsprocket.com](http://martinsprocket.com)**