



PULLEY STOCK PROFILE



**DODGE HEAVY DUTY DRUM AND WING PULLEYS ARE
RENOWNED FOR THEIR RELIABILITY AND PERFORMANCE.
DESIGNED TO WITHSTAND THE MOST CHALLENGING CONDITIONS
FOUND IN MINING, AGGREGATE, AND OTHER HEAVY-DUTY APPLICATIONS.**

 VISIT APPLIEDNZ.CO.NZ

HEAVY DUTY XT DRUM PULLEYS



Dodge® XT Conveyor Pulleys

Dodge heavy duty drum and wing pulleys have been operating in the world's most demanding bulk material handling applications for over 100 years. Pulleys can be provided with high quality lagging designed to ensure maximum belt and pulley life in tough applications.

- XT hub style bushings with 9.5 degree taper angle for easy- on, easy-off
- High strength submerged arc or gas-metal arc welds
- Available as standard with vulcanised SBR lagging



STOCKED IN NEW ZEALAND

STOCKED IN AUSTRALIA & USA

STOCKED IN THE USA ONLY

HEAVY DUTY XT DRUM PULLEYS WITH 10 MM (3/8 INCH) HERRINGBONE

| DIAMETER | HUB | FACE WIDTH | | | | | | |
|------------------|------|------------------|------------------|------------------|------------------|-------------------|-------------------|-------------------|
| | | 508 MM / 20 INCH | 660 MM / 26 INCH | 812 MM / 32 INCH | 965 MM / 38 INCH | 1120 MM / 44 INCH | 1300 MM / 51 INCH | 1600 MM / 63 INCH |
| 152 MM / 6 INCH | XT25 | 229451 | 229117 | 229118 | 229119 | 229120 | 229121 | 293295 |
| 200 MM / 8 INCH | XT25 | | 229452 | 229125 | 291323 | 292046 | 292630 | 293317 |
| | XT30 | 229123 | 229124 | 229126 | 229128 | 292048 | 292632 | 293319 |
| 254 MM / 10 INCH | XT25 | 229131 | 229453 | 229454 | 229361 | 229455 | 229457 | 293359 |
| 305 MM / 12 INCH | XT25 | 229458 | 229459 | 229460 | 291550 | 292137 | 229162 | 229347 |
| | XT30 | 229145 | 229407 | 229408 | 229462 | 229464 | 229465 | 229169 |
| | XT35 | 229146 | 229150 | 229151 | 228835 | 229160 | 229466 | 229437 |
| | XT40 | 290017 | 290217 | 290835 | 229159 | 229161 | 229163 | 229170 |
| | XT45 | 290018 | 290219 | 290838 | 291555 | 292142 | 292727 | 293421 |
| 355 MM / 14 INCH | XT25 | 229467 | 229445 | 229441 | 229442 | 229411 | 229443 | 229444 |
| | XT30 | 229174 | 229468 | 229469 | 229470 | 229471 | 229473 | 229192 |
| | XT35 | 229175 | 229385 | 229182 | 229386 | 229472 | 229474 | 229193 |
| | XT40 | 229176 | 229181 | 229183 | 229184 | 229185 | 229186 | 229194 |
| | XT45 | 290027 | 290280 | 290897 | 291611 | 292202 | 292785 | 229195 |
| | XT50 | 290028 | 290282 | 290899 | 291613 | 292204 | 292787 | 293484 |
| 406 MM / 16 INCH | XT25 | 227507 | 229412 | 229387 | 229415 | 229389 | 292845 | 293542 |
| | XT30 | 229199 | 229413 | 229414 | 229416 | 229477 | 229478 | 229217 |
| | XT35 | 229200 | 229400 | 229401 | 229402 | 229450 | 229391 | 229218 |
| | XT40 | 229201 | 229206 | 229388 | 229476 | 229390 | 229392 | 229219 |
| | XT45 | 290037 | 290343 | 290958 | 291675 | 229207 | 229500 | 229220 |
| | XT50 | 290038 | 290345 | 290960 | 291677 | 292270 | 292851 | 293548 |
| 460 MM / 18 INCH | XT25 | 229224 | 229366 | 229479 | - | - | - | - |
| | XT30 | 229225 | 229417 | 229418 | 229419 | 229233 | - | 229249 |
| | XT35 | 229226 | 229409 | 229403 | 229410 | 229482 | 229368 | 229370 |
| | XT40 | - | 229230 | 229480 | 229481 | 229234 | 229369 | 229371 |
| | XT45 | - | - | - | 291675 | 229207 | 229242 | 229220 |
| 510 MM / 20 INCH | XT30 | - | - | 229420 | - | 229252 | 229257 | 229265 |
| | XT35 | - | - | 229488 | 229490 | 229253 | - | - |
| | XT40 | - | 229404 | 229405 | 227344 | 229254 | 229491 | 229266 |
| 610 MM / 24 INCH | XT40 | - | - | 229421 | 234592 | - | - | - |
| | XT45 | - | 229396 | - | 229398 | 229399 | 229378 | 229380 |
| 760 MM / 30 INCH | XT50 | - | - | 291205 | - | - | - | - |
| 915 MM / 36 INCH | XT50 | - | - | - | 291997 | - | - | - |

HEAVY DUTY XT DRUM PULLEYS

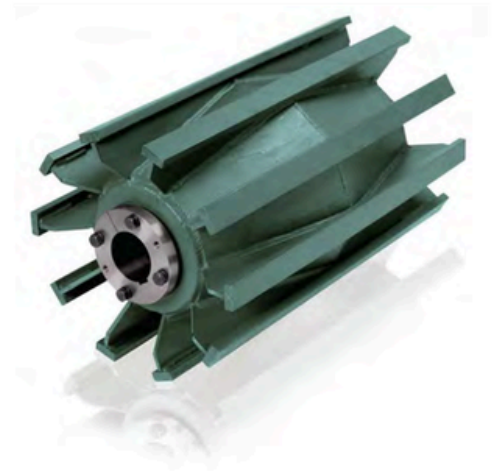
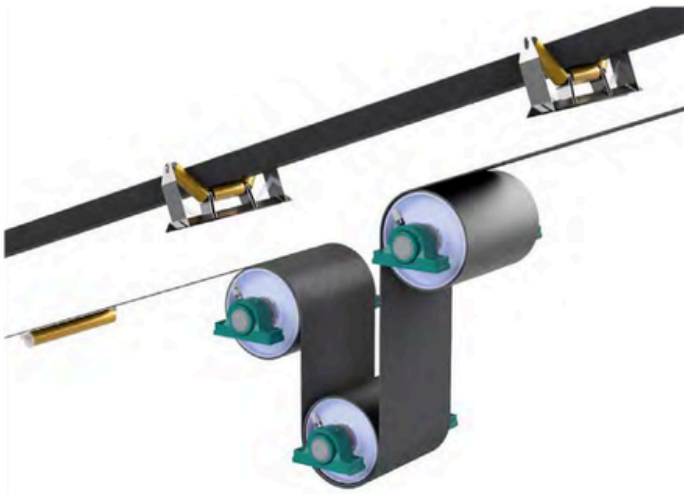
HEAVY DUTY XT DRUM PULLEYS
WITH NO LAGGING

STOCKED IN AUSTRALIA & USA

STOCKED IN THE USA ONLY

| DIAMETER | HUB | FACE WIDTH | | | | | | | |
|------------------|------|------------------|------------------|------------------|------------------|------------------|-------------------|-------------------|-------------------|
| | | 508 MM / 20 INCH | 609 MM / 24 INCH | 660 MM / 26 INCH | 812 MM / 32 INCH | 965 MM / 38 INCH | 1120 MM / 44 INCH | 1300 MM / 51 INCH | 1600 MM / 63 INCH |
| 152 MM / 6 INCH | XT25 | 231504 | 231506 | 231507 | 231509 | 231511 | 231513 | 231516 | 231519 |
| 200 MM / 8 INCH | XT25 | 231528 | 231532 | 231534 | 231537 | 231543 | 231545 | 231549 | 293301 |
| | XT30 | 231529 | 231533 | 231535 | 231538 | 231544 | 231546 | 231550 | 231553 |
| 254 MM / 10 INCH | XT25 | 231563 | 231568 | 231570 | 231575 | 231579 | 231582 | 231587 | 231594 |
| | XT30 | 231564 | 231569 | 231571 | 231576 | 231580 | 231583 | 231588 | 231595 |
| 305 MM / 12 INCH | XT25 | 231605 | 231612 | 231615 | 231623 | 231632 | 231641 | 231649 | 231661 |
| | XT30 | 231606 | 231613 | 231616 | 231624 | 231633 | 231642 | 231650 | 231662 |
| | XT35 | 231607 | 231614 | 231617 | 231625 | 231634 | 231643 | 232628 | 231663 |
| | XT40 | - | - | 231618 | 231626 | 231635 | 231644 | 292696 | 293389 |
| | XT45 | - | - | 290188 | 231627 | 291524 | 292111 | 231715 | 231729 |
| 355 MM / 14 INCH | XT25 | 231670 | 231676 | 231680 | 231690 | 231698 | 231705 | 231715 | 231729 |
| | XT30 | 231671 | 231677 | 231681 | 231691 | 231699 | 231706 | 231716 | 231730 |
| | XT35 | - | 231678 | 231682 | 231692 | 231700 | 231707 | 231717 | 231731 |
| | XT40 | 231672 | - | 231683 | 231693 | 231701 | 231708 | 231718 | 231732 |
| | XT45 | - | 231679 | 290244 | 231694 | 231702 | 231709 | 231719 | 293445 |
| | XT50 | - | - | 290246 | 290862 | 231703 | 292167 | 292751 | 293447 |
| 406 MM / 16 INCH | XT25 | 231746 | 231755 | 231758 | 231771 | 231784 | - | - | - |
| | XT30 | 231747 | 231756 | 231759 | 231772 | 231785 | 231797 | 231807 | 231822 |
| | XT35 | 231748 | 229891 | 231760 | 231773 | 231786 | 231798 | 231808 | 231823 |
| | XT40 | 231749 | 231757 | 231761 | 231774 | 231787 | 231799 | 231809 | 231824 |
| | XT45 | - | - | 231762 | 231775 | 231788 | 231800 | 231810 | 231825 |
| | XT50 | - | - | 231763 | 231776 | 231789 | 292233 | 231811 | 231826 |
| 460 MM / 18 INCH | XT25 | 231849 | 231857 | 231860 | 231875 | - | - | - | - |
| | XT30 | 231850 | 231858 | 231861 | 231876 | 231892 | - | 231918 | - |
| | XT35 | 231851 | 231859 | 231862 | 231877 | 231893 | 231905 | 231919 | 231939 |
| | XT40 | 231852 | 229899 | 231863 | 231878 | 231894 | 231906 | 231920 | 231940 |
| | XT45 | - | - | 231864 | 231879 | 231895 | 231907 | 231921 | 231941 |
| 510 MM / 20 INCH | XT30 | 231966 | 231975 | 231979 | 231995 | 232012 | 232025 | 232038 | 232056 |
| | XT35 | 231968 | 231976 | 231980 | 231996 | 232013 | 232026 | 232039 | 232057 |
| | XT40 | 231969 | 231977 | 231981 | 231997 | 232014 | 232027 | 232040 | 232058 |
| 610 MM / 24 INCH | XT40 | 232103 | 232113 | 232117 | 232131 | 232147 | 232162 | 232179 | 232204 |
| | XT45 | 232104 | 229915 | 232118 | 232132 | 232148 | 232163 | 232180 | 232205 |
| 760 MM / 30 INCH | XT50 | 232256 | 232266 | 290566 | 232276 | 232287 | 232299 | 232314 | 232331 |
| 915 MM / 36 INCH | XT50 | 232376 | 232386 | 290650 | 291243 | 291955 | 232390 | 232398 | 232407 |

XT WING PULLEYS



STOCKED IN NEW ZEALAND

STOCKED IN AUSTRALIA & USA

STOCKED IN THE USA ONLY

HEAVY DUTY XT WING PULLEYS

| DIAMETER | HUB | FACE WIDTH | | | | | | |
|------------------|------|------------------|------------------|------------------|------------------|-------------------|-------------------|-------------------|
| | | 508 MM / 20 INCH | 660 MM / 26 INCH | 812 MM / 32 INCH | 965 MM / 38 INCH | 1120 MM / 44 INCH | 1300 MM / 51 INCH | 1600 MM / 63 INCH |
| 200 MM / 8 INCH | XT25 | 219593 | 219597 | 219601 | 219604 | 219605 | 219607 | 219609 |
| 254 MM / 10 INCH | XT25 | 209069 | 219072 | 225127 | 219080 | 219087 | 219092 | 219097 |
| | XT30 | - | 219073 | 219077 | 219081 | 219088 | 219093 | 219098 |
| 305 MM / 12 INCH | XT25 | 219110 | 219116 | 225128 | 234116 | 219135 | 219144 | 219152 |
| | XT30 | 219111 | 219117 | 219123 | 219129 | 219136 | 219145 | 219153 |
| | XT35 | - | - | - | 219131 | 219138 | 219649 | 219155 |
| 355 MM / 14 INCH | XT25 | 219169 | 219175 | 225129 | 219187 | 219197 | 225130 | 219210 |
| | XT30 | 219170 | 219176 | 219180 | 219188 | 219198 | 219202 | 219211 |
| | XT35 | - | - | - | 219189 | 219200 | 219204 | 219213 |
| 406 MM / 16 INCH | XT25 | 219228 | 219233 | 219243 | 219252 | - | 219272 | 219284 |
| | XT30 | 219229 | 219234 | 219244 | 219253 | 219265 | 219273 | 219285 |
| | XT40 | - | 219236 | 219245 | 219255 | 219267 | 219275 | 219287 |
| 460 MM / 18 INCH | XT30 | 219303 | 219309 | 219321 | 219333 | 219347 | 219358 | 219369 |
| | XT40 | - | 219311 | 219323 | 219335 | 219349 | 219360 | 219371 |
| | XT50 | - | - | - | 219337 | 219351 | 225212 | 219373 |
| 510 MM / 20 INCH | XT35 | 219388 | 219395 | 219402 | 219409 | 219423 | 219436 | 219451 |
| | XT40 | - | 219397 | 219404 | 219411 | 219425 | 219438 | 219453 |
| 610 MM / 24 INCH | XT40 | - | 219473 | 219480 | 219491 | 219499 | 219510 | 219521 |
| | XT50 | - | - | - | 219493 | 219501 | 219512 | 219523 |
| 760 MM / 30 INCH | XT40 | 298723 | - | 219542 | 219545 | 219549 | 219557 | 219917 |

XT BUSHINGS

STOCK PART NUMBERS FOR COMMON SHAFT SIZES

| BUSHING SIZE | PART NUMBER | BUSHING BORE |
|--------------|-------------|--------------------|
| XT25 | 226905 | 1 Pilot Bore |
| | 226955 | 40MM |
| | 226947 | 50MM |
| | 226956 | 60MM |
| | 226811 | 65MM |
| XT30 | 226906 | 1-3/8 Pilot Bore |
| | 226954 | 40MM |
| | 226952 | 50MM |
| | 225702 | 60MM |
| | 226957 | 65MM |
| | 226936 | 70MM |
| | 226813 | 75MM |
| XT35 | 226907 | 1-7/8 Pilot Bore |
| | 226958 | 60MM |
| | 226946 | 65MM |
| | 226953 | 75MM |
| | 226937 | 80MM |
| | 226938 | 90MM |
| XT40 | 226908 | 1-15/16 Pilot Bore |
| | 226944 | 65MM |
| | 226939 | 70MM |
| | 226945 | 75MM |
| | 226940 | 90MM |
| | 226814 | 100MM |
| XT45 | 226909 | 1-15/16 Pilot Bore |
| | 226950 | 90MM |
| | 226951 | 100MM |
| | 226815 | 110MM |
| XT50 | 226910 | 2-7/16 Pilot Bore |
| | 226960 | 100MM |
| | 226948 | 115MM |
| | 226816 | 120MM |
| | 226949 | 125MM |

Additional bore sizes available on request

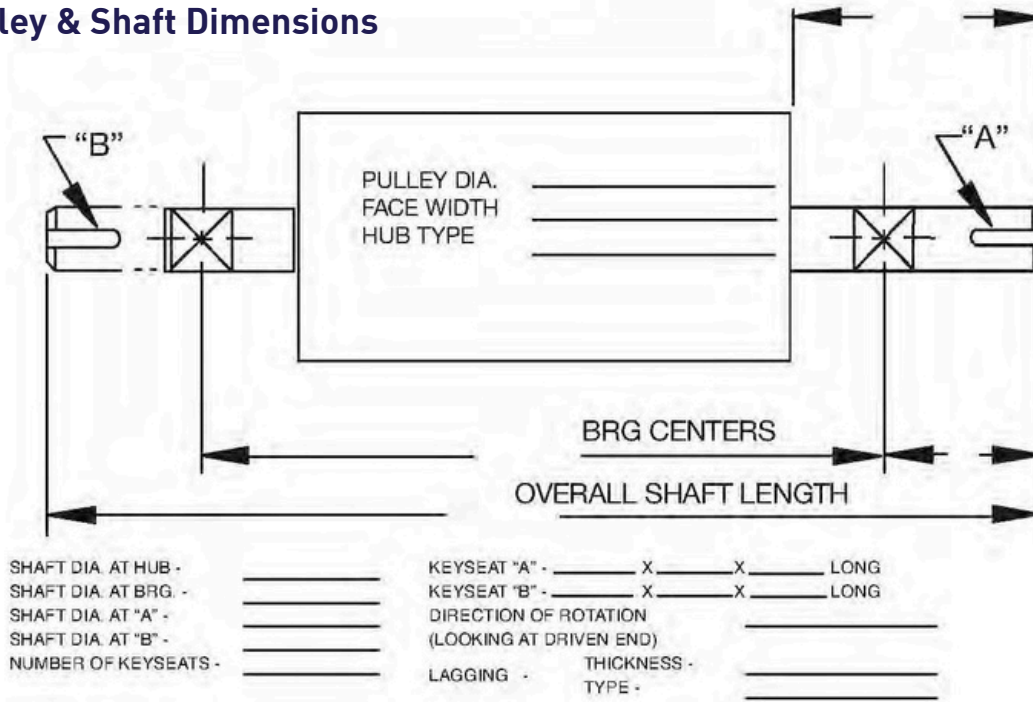


HOW TO ORDER

Pulley Assemblies

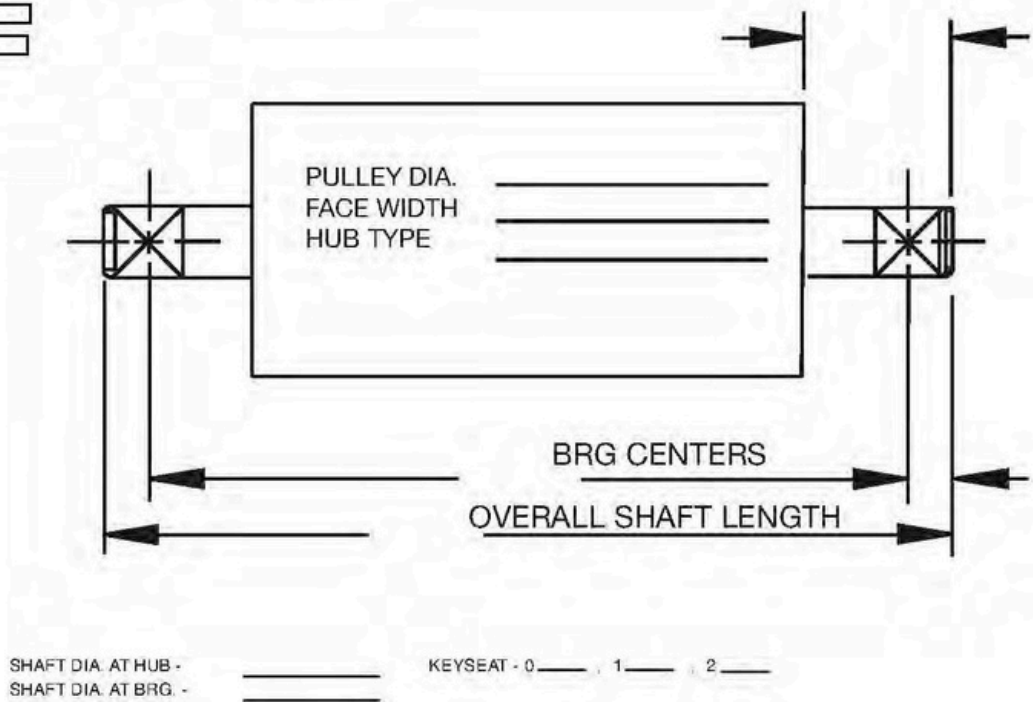
To order shafting, please copy and complete the sketches shown below.

Drive Pulley & Shaft Dimensions



Non-Drive Pulley & Shaft Dimensions

DRUM -
WING -



DODGE RAPTOR COUPLING FLEXIBLE ELEMENT



1. NATURAL RUBBER WINGLOCK™ ELEMENT

- Finite-Element optimised flexible design, featuring WingLock technology
- Higher bond strength, improved fatigue resistance, and documented longer life
- Industry leading misalignment capabilities
- Torque range up to 38,438 Nm

2. EASIER INSTALLATION & REDUCED MAINTENANCE

- Slotted clamp ring holes offer 187% more hardware clearance
- Split element for easy replacement
- Drop-in interchange without any modifications or additional materials
- Maintenance free element

3. LONGER DRIVEN EQUIPMENT LIFE

- Rigorously tested to 10x DIN 741 coupling standards
- Significantly lower torsional and bending stiffness
- Up to 16.7x increase in connected L10 bearing life
- ISO class 10.9 hardware offers a 40% increase in proof strength

4. FLEXIBLE MOUNTING OPTIONS

- Close-coupled and spacer designs for a wide range of shaft gaps
- Interchangeable hubs for reduced inventory
- Finished bore hubs with setscrew locking for easy installation
- Taper-Lock bushed hubs for clean, compact installation
- Bores up to 229 mm

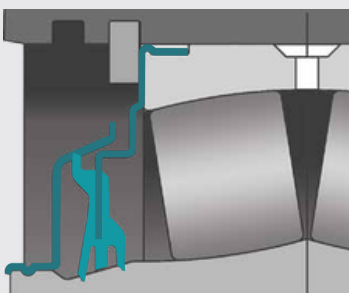
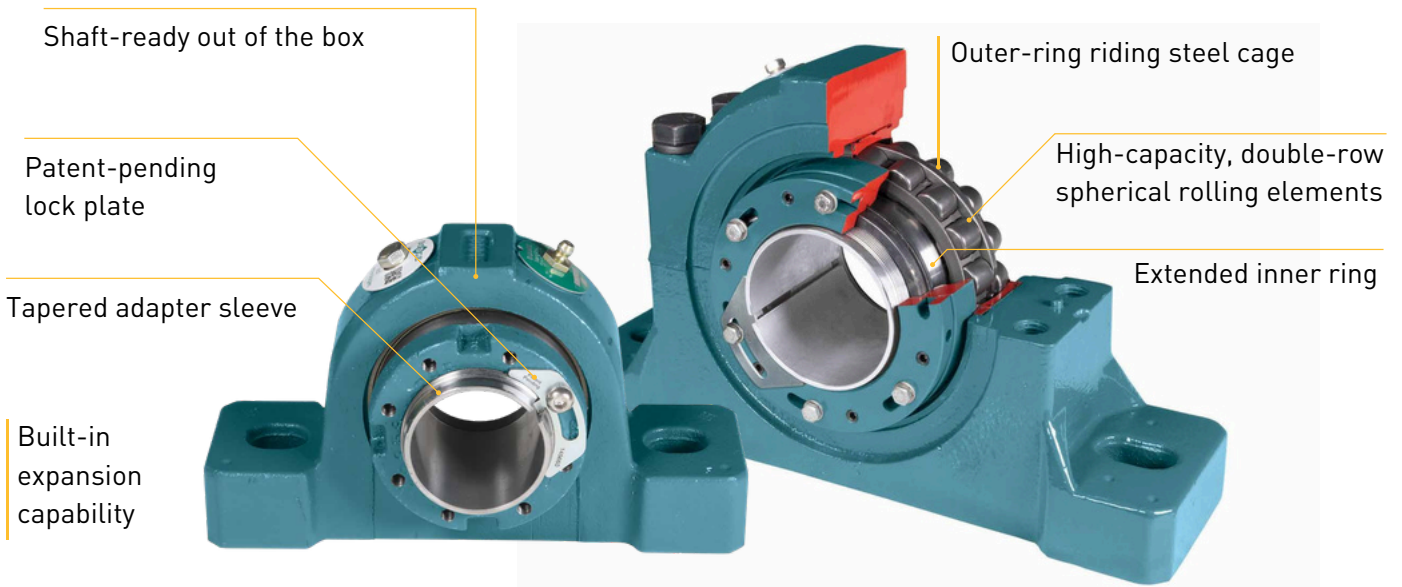
DODGE SAFETY MOUNT®

The Dodge Safety Mount® family is a range of mounted spherical roller bearings designed to dramatically improve installation safety, reliability, and uptime. Introduced in 1996, Safety Mount pioneered the patented push-pull adapter mounting system, eliminating guesswork, brute force, and dangerous removal practices.

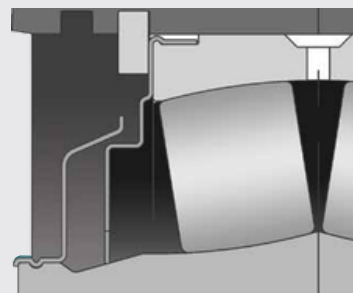
Factory-assembled, pre-lubricated, and shaft-ready out of the box, Safety Mount bearings are the engineered for the most demanding applications across mining, aggregates, forestry, grain, steel, wastewater, and bulk handling.



Innovative features for increased performance



Trident™ triple-lip seal
Mechanically-retained seal provides three points of contact featuring a tapered seal landing to prevent seal blowout and contamination for extended product life



Labyrinth seal (optional)
Corrosion-resistant flinger and steel clearance seal offer protection in high-speed and high-temperature applications

AVAILABLE PRODUCT RANGES & FEATURES



SCAN HERE FOR ISN INSTALLATION INSTRUCTION



ISN

SN-dimensional solution

Safety Mount ISN mounted spherical roller bearings are the drop-in replacement solution to traditional SN-dimensional products, extending the Safety Mount legacy to keep your operations up and running across the globe.

Housing options

- 2-bolt pillow block
- 4-bolt pillow block

Housing material

Cast iron

Bore size range

30 mm—170 mm
(1-1/8 in—6 in)

ISAF

Split-housed, SAF-dimensional unit

SAF-style bearings are notorious for inferior sealing systems and complicated installations that require full component assembly and on-site lubrication. Their ineffective grease paths prevent clean grease from reaching the rolling elements - failing to protect against contamination and leading to premature failure. Additionally, the requirement to use feeler gauges to set bearing clearance introduces subjective calculations, often resulting in inconsistent installations that compromise reliability.

Housing options

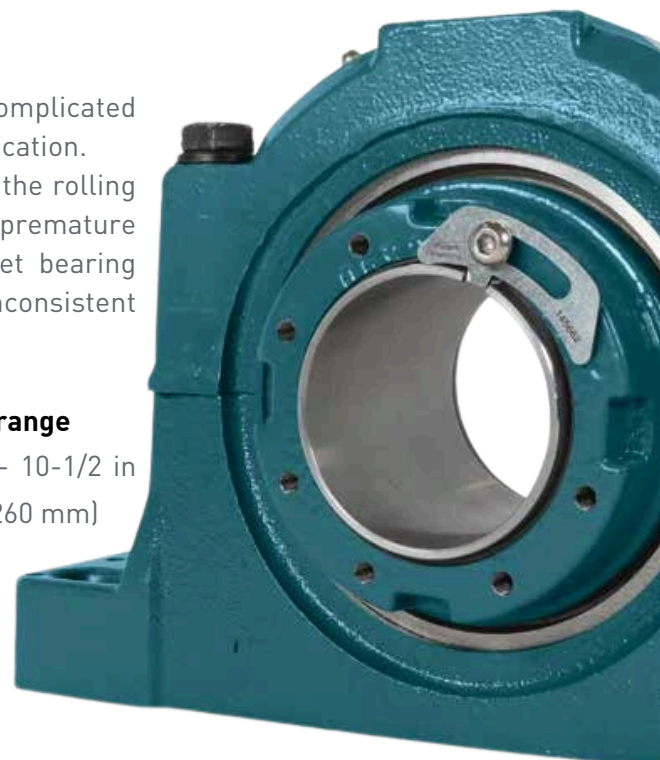
- 2-bolt pillow block
- 4-bolt pillow block

Housing material

Cast iron

Bore size range

1-7/16 in— 10-1/2 in
(35 mm—260 mm)



TORQUE-ARM II

Shaft Mount Gear Reducer

Torque-Arm II shaftmount reducers deliver a longer life in demanding applications. Torque-Arm II is designed with a patented harsh-duty sealing system, twin-tapered bushings, and the highest torque rating per case size. It provides maximum reliability with less maintenance to increase operating time and lower your total cost of ownership.

Why Torque-Arm II?

EASY TO USE

- Flexible mounting to minimize inventory including shaft mount, flange mount, and screw conveyor drives
- Features twin-tapered bushing system that makes installation and removal quick and easy

ATEX CERTIFIED

Environments that are mildly explosive become safer with use of ATEX certified reducers.



AVAILABILITY

- Available in 12 case sizes up to 400 Hp (300 kW)
- Torque ratings through 500,000 lb-in (56,500 Nm)
- Accommodates shaft sizes up to 7 in (160 mm)
- Warranty coverage is 36 months from date of manufacture or 18 months in service

SAFETY FIRST WITH INBOARD SHAFT GUARD

Dodge safety bushing covers are made from a heavy-duty ABS polymer. It covers the shaft between the gearbox and bearing. They are available individually or as a kit. It's trimmable to 1 in increments and adjustable to 1/4 in to fine tune.

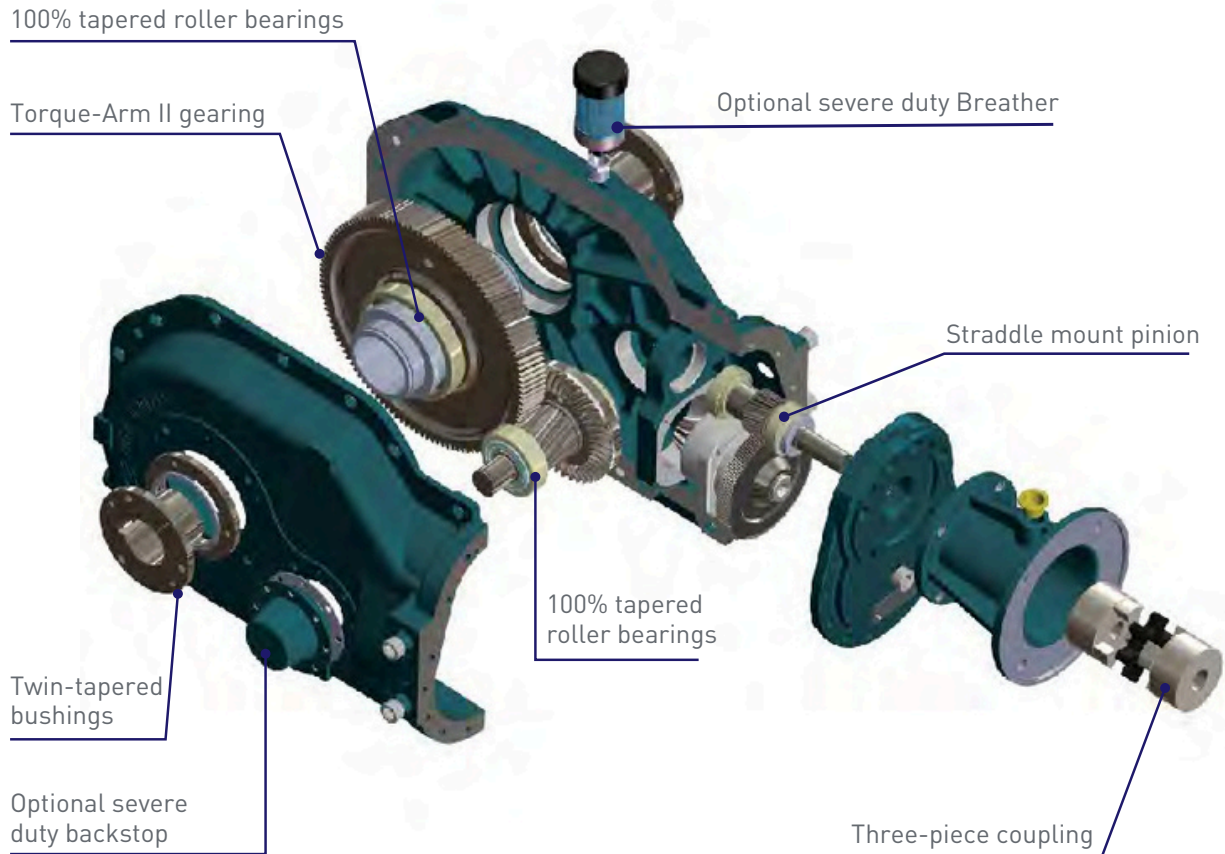


NEW TA II SAFETY BELT GUARD

Designed to protect workers from rotating equipment, the Dodge Torque-Arm II belt guard has been enhanced with features that increase safety and reduce operating costs. Maintenance crews can now easily inspect v-belts mounted in the most common mounting positions, while following MSHA/ OSHA regulations.

MOTORIZED TORQUE-ARM II

Shaft Mount Gear Reducer



The Motorized Torque Arm II (MTA) is easy to install and built to last. It is a right angle, beltless direct-drive solution. This heavy-duty gear reducer is designed to deliver industry-leading performance in some of the most demanding applications.

The MTA features the patented twin-tapered bushing system that makes installation and removal easy. This system is available in standard and short-shaft systems and both guarantee maximum torque transmission.

Engineered for reliability, the MTA has patented, premium-sealing systems that provide maximum uptime with less maintenance. This product is also ATEX certified and complies with Category 2 and M2 equipment, which is intended for use in potentially explosive atmospheres.

MTA FEATURES

- Compact space-saving design
- Rugged and case-carburized helical bevel gearing
- Heavy-duty tapered roller bearings throughout
- Harsh-duty lip seals for extended wear and -40°C to +150°C (-40°F to +300°F) temperature ranges
- Metal excluder shield-sealing system with rubber contact lip
- Standard IEC B5 flange adapter or NEMA C-face motors
- Available in seven sizes from 1.5 kW to 75 kW (3 hp to 100 hp)
- All tapered roller bearings

OUR LOCATIONS

CN 1819

● AUCKLAND

Head Office & Branch
67 Lady Ruby Drive
East Tamaki, Auckland 2013
P: (09) 274 0056
nz-auckland@appliednz.com

● LOWER HUTT

22 Waione Street
Lower Hutt, Wellington 5012
P: (04) 569 3159
nz-wellington@appliednz.com

● DUNEDIN

4-6 McBride Street
Dunedin 9012
P: (03) 455 5652
nz-dunedin@appliednz.com

● CHRISTCHURCH

Unit 8, 303 Blenheim Road
Upper Riccarton, Christchurch 8041
P: (03) 341 6537
nz-christchurch@appliednz.com

● NEW PLYMOUTH

Unit 1, 37 Hurlstone Drive
Waiwhakahio, New Plymouth 4312
P: (06) 769 5152
nz-newplymouth@appliednz.com

● PALMERSTON NORTH

601D Tremaine Avenue
Palmerston North 4410
P: (06) 356 9145
nz-palmerstonnorth@appliednz.com

● HASTINGS

1206 Omaha Road
Hastings 4175
P: (06) 879 4362
nz-hastings@appliednz.com

● ROTORUA

45 White Street
Fenton Park, Rotorua 3010
P: (07) 349 2451
nz-rotorua@appliednz.com



**SCAN THE QR CODE
& CONNECT WITH US**



Follow us



Join Our Network



Shop Online



Become A Fan

Contact an Applied® representative today!

