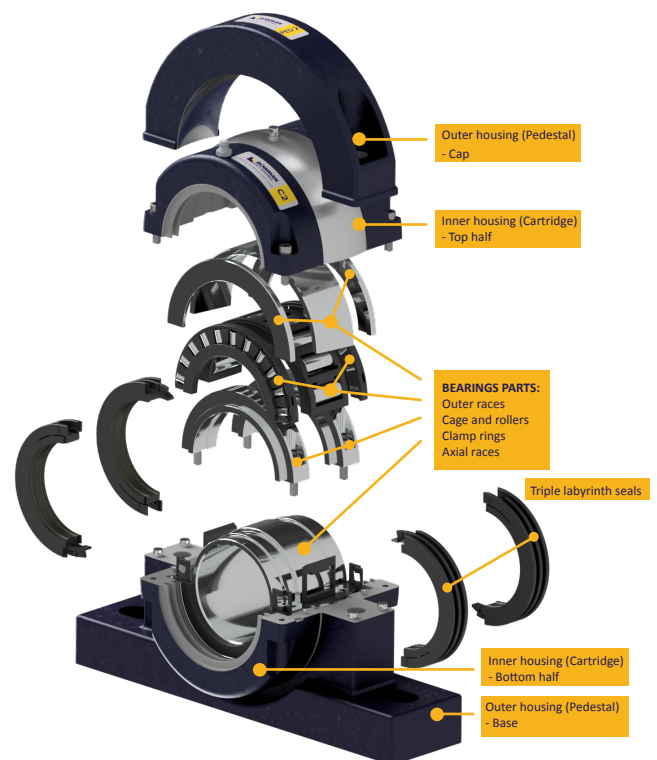
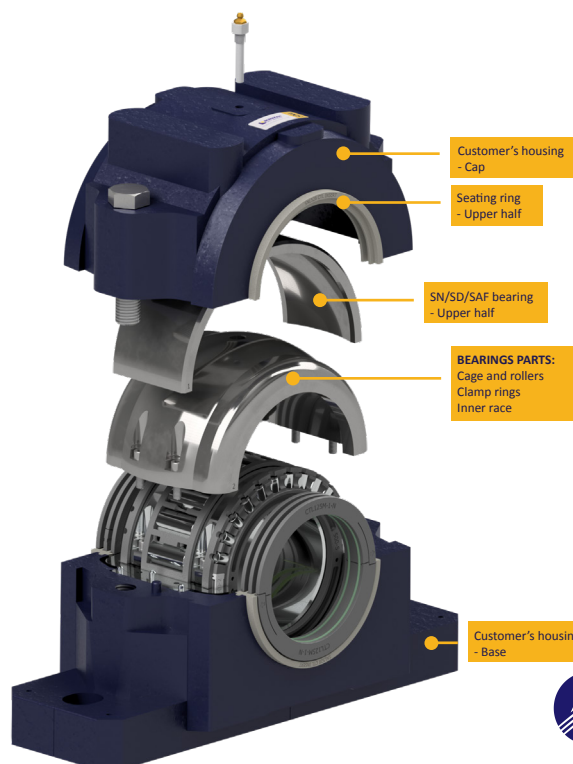


# AN INNOVATOR OF PERFORMANCE- ENGINEERED SPLIT ROLLER BEARINGS

## ADVANCED SPLIT ROLLER BEARINGS

### KEY FEATURE AND BENEFITS

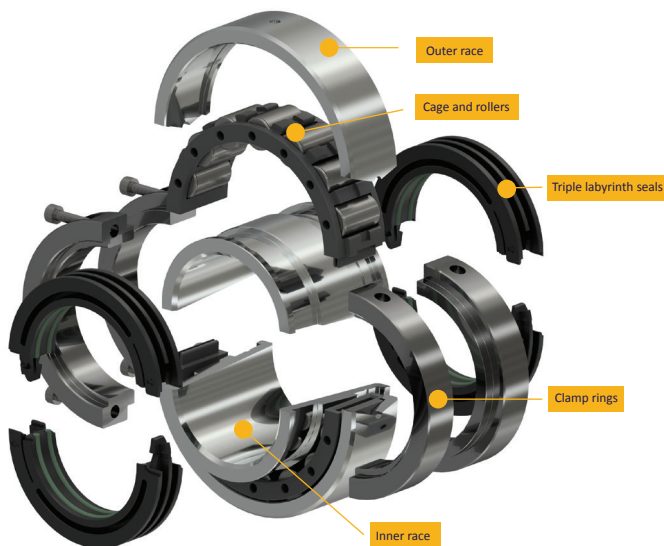
- Significantly increases axial load capacity in both directions
- Faster bearing changes for reduced downtime
- Mounts into existing pedestal or other housing type
- 30mm to 300mm (1 3/16 in. to 12 in.) shaft diameters
- Larger sizes manufactured to order
- Dimensionally interchangeable
- Cover both the S1/01/LSM/LSE and S2/02/MSM/MSE variants
- Patented 3d printed cages
- Requires less lubricant
- 2D drawings and 3D models available
- Patented triple labyrinth extended seal for extending the life of worn shafts



## SN/SD/SAF SPLIT ROLLER BEARINGS

### KEY FEATURE AND BENEFITS

- Replace equivalent solid spherical roller bearings without removing ancillary components from the shaft
- Seating ring included for mounting into existing plummer block
- Faster bearing changes for reduced downtime
- 135mm to 300mm (5 3/16 in. to 12 in.) shaft diameters
- Replaces adapter-sleeve mounted bearings (eg CCK/W33 type)
- Incorporates additional sealing to protect bearing
- Patented 3D printed cages
- Requires less lubricant
- 2D drawings and 3D models available

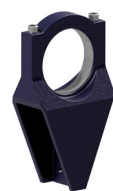
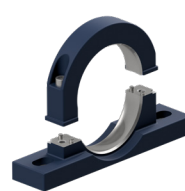
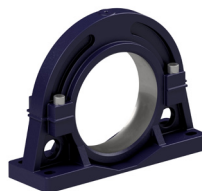
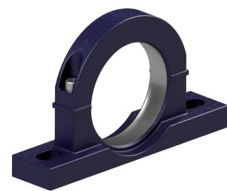


## ENHANCED SPLIT ROLLER BEARINGS

### KEY FEATURE AND BENEFITS

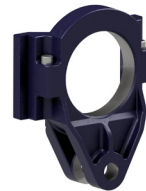
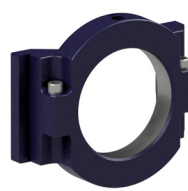
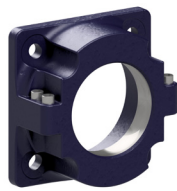
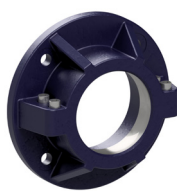
- Direct replacement for other manufacturer's split roller bearings
- 30mm to 160mm (1 3/16 in. to 6 in.) shaft diameters
- Dimensionally interchangeable with competitor split roller bearings
- S1/01/LSM/LSE series equivalents available
- Patented 3D printed cages

## MOUNTING OPTIONS



PEDESTALS

ROD END



FLANGES

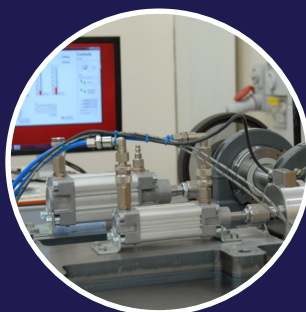
TAKE UP

HANGER

## WHY CHOOSE BOWMAN



BESPOKE BEARING  
DESIGN AND MANUFACTURE  
FOR COMPLEX APPLICATIONS



ANALYSIS AND  
INSPECTION SERVICES



MULTIPLE LOCATIONS  
GLOBALLY



A NETWORK OF GLOBAL  
MAINTENANCE PARTNERS AND  
DIRECT FIELD SERVICE OPTIONS

A division of Bowman International Ltd

[www.bowmansplitbearings.com](http://www.bowmansplitbearings.com) +44 (0) 1235 462500

**BOWMAN**<sup>®</sup>  
**SPLIT BEARINGS**